



CangZhou Changyuan Fittings Co.,ltd

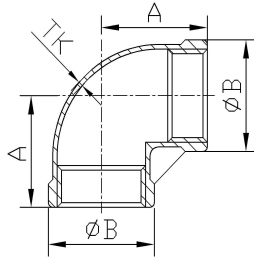
Head office and machining plant: No.3 Jiuhe East Road,Development Zone,Cangzhou,Hebei,China 061000

Casting Plant: No.26 Shigang Road,Development Zone,Cangzhou,Hebei,China 061000

[Http://www.con-well.com](http://www.con-well.com) E-mail: Con-well@vip.163.com Sale@con-well.com Whatapp:+8613803176339

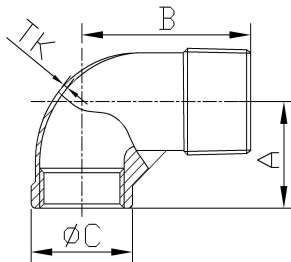
(Measures:mm)

90°Elbow(LB)



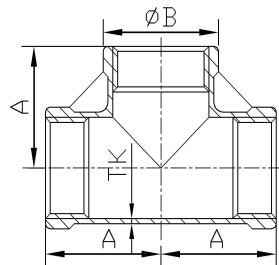
Item	Size	1/8"	1/4"	3/8"	1/2"	3/4"	1"	1 1/4"	1 1/2"	2"	2 1/2"	3"	4"
A		16	18	21	25	30	34	40	43.5	53.5	63.5	74	89
B		14	16.5	20	26	32	39.2	47.2	54.5	67	85	97.5	124.5
TK		1.6	1.7	1.5	1.6	1.7	2.1	2.2	2.4	2.7	3.3	2.8	3.8

90°Street Elbows(SLB)



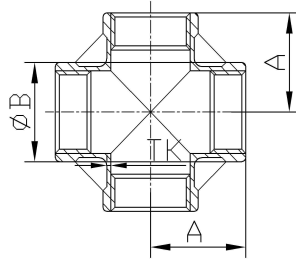
Item	Size	1/8"	1/4"	3/8"	1/2"	3/4"	1"	1 1/4"	1 1/2"	2"	2 1/2"	3"	4"
A		18	20	21	22	27	33	38	42	51	64	74	89
B		26	30	31	31	37	46	52	58	67	81	92	108
C		16	17	20	26	32	39	47	54.5	67.5	84	96.8	124
TK		2.8	2	2.2	2.2	2.1	2.2	2.5	2.6	2.6	3.3	3	4

Tees(TB)



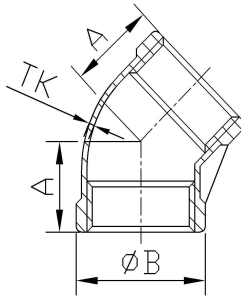
Item	Size	1/8"	1/4"	3/8"	1/2"	3/4"	1"	1 1/4"	1 1/2"	2"	2 1/2"	3"	4"
A		16	19	21	25	30	34	40	44	53.5	64	73	93.5
B		14	17	20	26	32	39.2	42	54	67.5	84	97	125.6
TK		1.9	1.5	2.3	1.8	1.9	2.1	2.3	2.4	2.5	3.3	3.3	4.6

Crosses(+B)



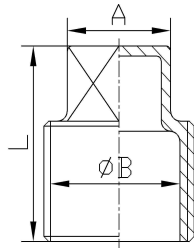
Item	Size	1/8"	1/4"	3/8"	1/2"	3/4"	1"	1 1/4"	1 1/2"	2"	2 1/2"	3"	4"
A		16	18	21	25	30	34	40	44	53.5	64	74	89
B		14	16.5	20	26	32	39	47	54.5	67	84	96.5	124
TK		2	2.3	2.2	1.7	1.8	2.1	2.1	2.1	2.1	3.3	3.3	4

45°Elbows (45°LB)



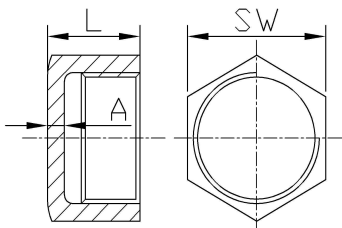
Item	Size	1/8"	1/4"	3/8"	1/2"	3/4"	1"	1 1/4"	1 1/2"	2"	2 1/2"	3"	4"
A		14	16	18	20	25	27	32	33	40	43	50	60
B		14	17.5	21	26	32	39	49	55.2	68	85.5	98	125
TK		2	2	2.2	1.8	1.9	2	2.3	2.3	2.5	3	3	3.8

Square Plug (SQ)



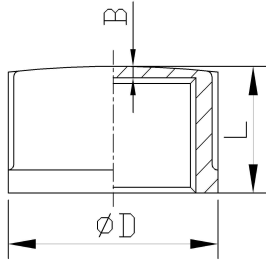
Item	Size	1/8"	1/4"	3/8"	1/2"	3/4"	1"	1 1/4"	1 1/2"	2"	2 1/2"	3"	4"
A		7	8.5	10	11	16	19	21.5	21.3	26.8	32	34	42
L		11	15	16	19	22	25	29.5	30	37	39	44	43
B		0	0	0	15.5	20.5	26.3	35	40.2	50.4	67.6	79.3	101
Note		solid	solid	solid	hollow	hollow	hollow	hollow	hollow	hollow	hollow	hollow	hollow

Hexagon Caps (HCB)



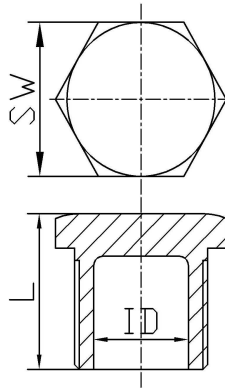
Item	Size	1/8"	1/4"	3/8"	1/2"	3/4"	1"	1 1/4"	1 1/2"	2"	2 1/2"	3"	4"
SW		12.5	15.2	18.7	25	30.7	37.3	46.5	53	64.3	80	92.5	120
L		12.1	15.1	15.5	19	20	23	24	25	29.5	32	34.5	40.5
A		2.4	2.6	3.5	3.7	2.5	3.2	3.3	3.5	3.6	5	4.7	3.8
Squar		6	6	6	6	8	8	8	8	8	8	8	8

Round Caps (CB)



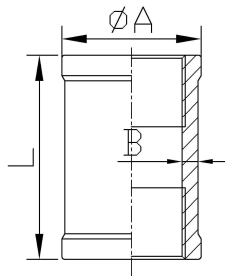
Item	Size	1/8"	1/4"	3/8"	1/2"	3/4"	1"	1 1/4"	1 1/2"	2"	2 1/2"	3"	4"
D		13.5	16.4	20	28	35	40	47.5	53.5	65.5	82	97.5	122
L		12	15.3	16.3	21	22.2	24	24	30	29.4	32	37	40
B		2.2	2.8	2.5	2.9	3.3	2.2	3	3.8	3.3	3	4.4	4.5

Hexagon Plug (HP)



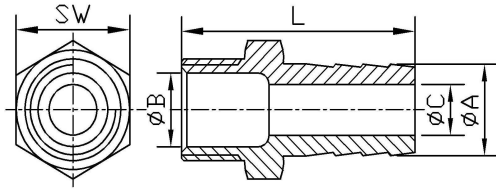
Item	Size	1/8"	1/4"	3/8"	1/2"	3/4"	1"	1 1/4"	1 1/2"	2"	2 1/2"	3"	4"
SW		12	15	18	22	28	36	43.6	50	62	78	92	116
L		14	17	17.8	20.9	25	26.7	30.5	30.6	34.3	39	42	47
ID		0	0	0	15	21	26	35	40.3	51.6	67	78.5	103
Square		6	6	6	6	6	8	8	8	8	8	8	8
Note		solid	solid	solid	hollow	hollow	hollow	hollow	hollow	hollow	hollow	hollow	hollow

Socket Banded (SB)



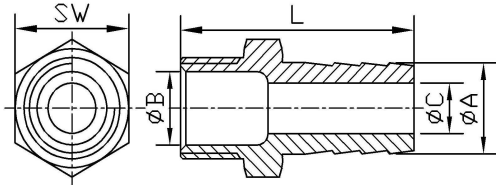
Item	Size	1/8"	1/4"	3/8"	1/2"	3/4"	1"	1 1/4"	1 1/2"	2"	2 1/2"	3"	4"
A		14	16.5	20	26	32	39	47	54.5	67.6	83.3	97	122.5
L		20	22.3	27	31.2	35	40	48	50	58.9	60.8	65.5	79
B		2	2.4	2.9	1.8	1.9	2.2	2.1	2.5	2.5	2.7	3	3.4

Hose Nipples Long Type (HON)



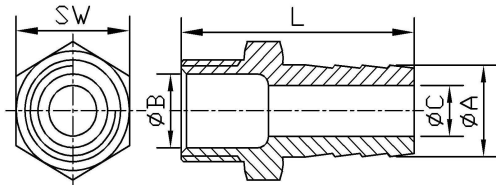
Item	Size	1/8"	1/4"	3/8"	1/2"	3/4"	1"	1 1/4"	1 1/2"	2"	2 1/2"	3"	4"
A		7	9	11	15	20	26	34	40.5	52.5	63.5	76.1	100
SW		11.2	15	18.3	22	28	36	44	50	62	78	91.3	116
L		41	48	48	52.6	61	66	75	82	98.5	116	119.5	127
B		4.3	8	11.3	15.4	20	26.2	35.4	40.2	51	64.7	77	102
C		4.2	5	7	10	15.1	20.4	27.6	33.5	45.5	53.4	66.7	91
Square		6	6	6	6	6	8	8	8	8	8	8	8

Hose Nipples Long Type (HON)



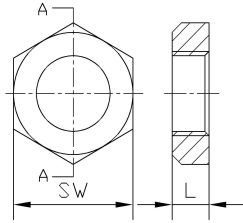
Item	Size	1/4"	3/8"	1/2"	1/2"	1/2"	3/4"	1"
A		11	12	11	13	20	25	27
SW		13.5	17	21.5	21.5	23.5	28.5	36
L		41.5	51.5	47	51.5	56.5	66.5	65
B		9	11	15	15	15	20.4	26
C		7	8.5	7	8.5	15	20.4	22
Square		6	6	6	6	6	6	8

Hose Nipples Short Type (HON)



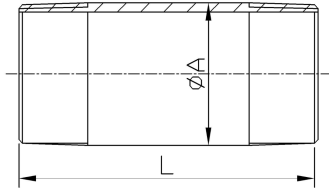
Item	Size	1/8"	1/4"	3/8"	1/2"	3/4"	1"	1 1/4"	1 1/2"	2"	2 1/2"	3"	4"
A								34	40.5	52.5	63.5	76.1	100
SW								43.5	50	62	77.5	91.5	115.5
L								66	68.5	82	96.5	105	115
B								35.2	40.4	51.5	64.2	77.3	102.2
C								27.8	33.8	45.7	55	66.8	90.6
Square								8	8	8	8	8	8

Hexgon Nut(LN)



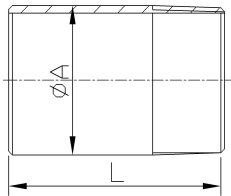
Item Size	1/8"	1/4"	3/8"	1/2"	3/4"	1"	1 1/4"	1 1/2"	2"	2 1/2"	3"	4"
SW	15	19.2	24	26.5	32	38.5	48	55	68	88.5	101.6	129.5
L	7	6	6.5	8	10	10	11.2	12	13.3	15	17.3	22.3

Barrel Nipples(BN)



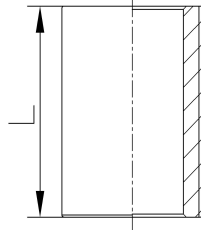
Item Size	1/8"	1/4"	3/8"	1/2"	3/4"	1"	1 1/4"	1 1/2"	2"	2 1/2"	3"	4"
L	40	40	40	60	60	60	80	80	100	100	120	120
A	10.3	13.7	17.1	21.34	26.67	33.4	42.16	48.26	60.33	76.3	88.9	114.3

Welding Nipples(WN)



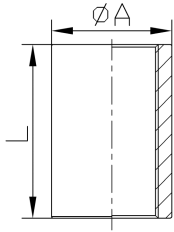
Item Size	1/8"	1/4"	3/8"	1/2"	3/4"	1"	1 1/4"	1 1/2"	2"	2 1/2"	3"	4"
L	30	30	30	35	40	40	50	50	50	60	70	80
A	10.3	13.7	17.1	21.34	26.67	33.4	42.16	48.26	60.33	76.3	88.9	114.3

Parrel Nipples(PN)



Item Size	1/8"	1/4"	3/8"	1/2"	3/4"	1"	1 1/4"	1 1/2"	2"	2 1/2"	3"	4"
L (parallel thread)	16	18	22	25	30	35	38	38	45	55	60	70
L (BSPT, NPT thread)	20	24	25	29	32	38	38	44	44	57	64	76

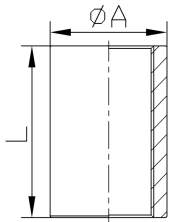
Full Couplings Standard: DIN2986



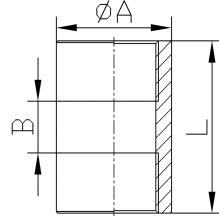
Size Item	DN6	DN8	DN10	DN15	DN20	DN25	DN32	DN40	DN50	DN65	DN80	DN100	DN125	DN150
A	14	18.5	21.3	26.4	31.8	39.5	48.3	54.5	66.3	82	95	122	147	174
L	17	25	26	34	36	43	48	48	56	65	71	83	92	92

Surface Choice : pipe surface, brushed surface, CNC machining surface.

Full Couplings Standard: ISO4144



(BSP,DIN2999)

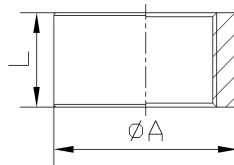


(BSPT)

Size Item	Thread	1/8"	1/4"	3/8"	1/2"	3/4"	1"	1 1/4"	1 1/2"	2"	2 1/2"	3"	4"
A	DIN2999/ISO228/BSPT	13	17	20	24.2	30.5	37.5	46.5	53	65.5	82	95	120
L		17	23.5	24.5	32	34.7	41	45	45	54	63	69	76
A	NPT	13	17	20	24.2	30.5	37.5	46.5	53	65.5	80	95.5	121
L		17	23.5	24.5	32	34.7	41	45	45	54	63	66.5	74
B		3	3	3	3	3	4	4	4	4	5	5	5

Surface Choice : pipe surface, brushed surface, CNC machining surface.

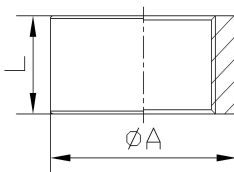
Half Couplings (NPT)



Size Item	1/8"	1/4"	3/8"	1/2"	3/4"	1"	1 1/4"	1 1/2"	2"	2 1/2"	3"	4"
A	13	17	20	24.2	30.5	38	47	53	65.5	80	95.5	121
L	7.8	9.8	10.5	14.5	15.5	18.8	21.5	21.5	23.7	29.8	31.3	37

Surface Choice : pipe surface, brushed surface, CNC machining surface.

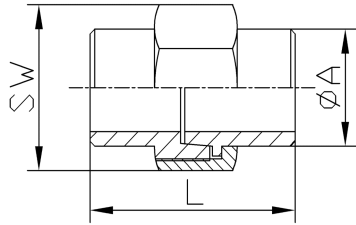
Half Couplings (BSP/DIN2999/ISO228)



Size Item	1/8"	1/4"	3/8"	1/2"	3/4"	1"	1 1/4"	1 1/2"	2"	2 1/2"	3"	4"
A	13	17	20	24.2	30.5	38	47	53	65.5	82	94.8	120
L	8	11.5	12	15	17	19	22	22	26	30	33	40

Surface Choice : pipe surface, brushed surface, CNC machining surface.

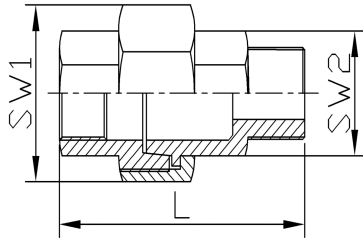
Unions Conical BW



*

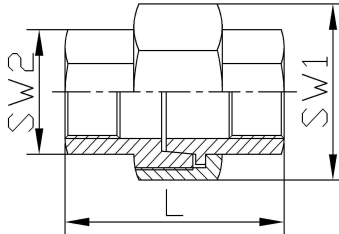
Item	Size	1/8"	1/4"	3/8"	1/2"	3/4"	1"	1 1/4"	1 1/2"	2"	2 1/2"	3"	4"
SW		25.2	30.4	34	37	46	52	64	69.5	85.6	105	117.6	147
A		10.2	13.5	17.2	21.3	27	33.7	42.4	48.2	60.2	76.1	89	114.3
L		33.5	38.5	39.5	45	45	47	52	54	62	67	73	78
Square		8	8	8	8	8	8	10	10	10	10	10	10

Unions conical M/F



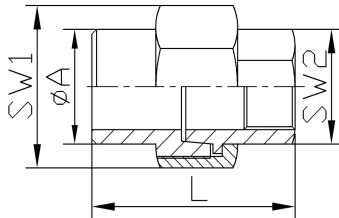
Item	Size	1/8"	1/4"	3/8"	1/2"	3/4"	1"	1 1/4"	1 1/2"	2"	2 1/2"	3"	4"
SW1		25	30.5	34	37	46	52	64.5	70	86	105	118.5	147
SW2		13	17	20.5	21.6	30	37	46	52	63.5	80	93	117
L		36	42.5	44	53	58	65	71.5	75	88	93	104	111
Square		8	8	8	8	8	8	10	10	10	10	10	10

Unions conical F/F



Item	Size	1/8"	1/4"	3/8"	1/2"	3/4"	1"	1 1/4"	1 1/2"	2"	2 1/2"	3"	4"
SW1		25	30.5	34	37	46	52	64.5	70	86	105	118.5	147
SW2		13	17	20.5	24.5	30	37	46	52	63.5	80	93	117
L		26.5	32	34	38	42.5	46.5	52	53	63	73	78.5	87
Square		8	8	8	8	8	8	10	10	10	10	10	10

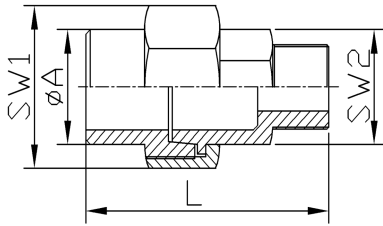
Unions conical BW/F



*

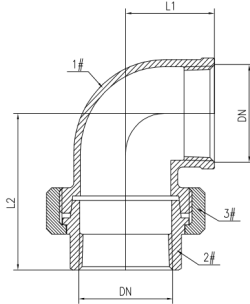
Item	Size	1/8"	1/4"	3/8"	1/2"	3/4"	1"	1 1/4"	1 1/2"	2"	2 1/2"	3"	4"
SW1		25	30.5	34	37	46	52	64	70	86	105	117.6	147
SW2		13	17	20.5	24.5	30	37	46	52	63.5	80	93	117
A		10.2	13.5	17.2	21.3	27	33.7	42.4	48.3	60.2	76.1	89	114.3
L			37	37	40	43.5	46.5	52	53.5	61			
Square		8	8	8	8	8	8	10	10	10	10	10	10

Unions conical BW/M



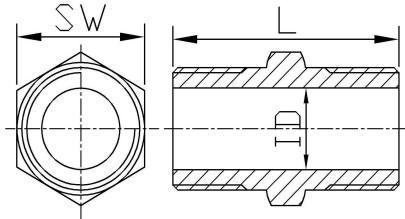
Item	Size	1/8"	1/4"	3/8"	1/2"	3/4"	1"	1 1/4"	1 1/2"	2"	2 1/2"	3"	4"
SW1		25.2	30.5	34	37	46	52	64	70	86	105	117.6	147
SW2		13	17	20.5	24.5	30	37	46	52	63.5	80	93	117
A		10.2	13.5	17.2	21.3	27	33.7	42.4	48.3	60.3	76.1	89	114.3
L			47.5	47	55	59	65	71.5	76	88			
Square		8	8	8	8	8	8	10	10	10	10	10	10

Union Elbow Conical F/F



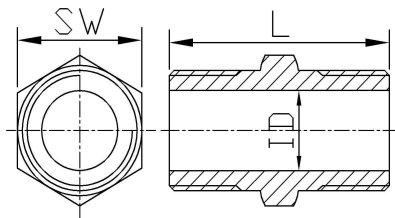
Item	Size	1/2"	3/4"	1"	1 1/4"	1 1/2"	2"
L1		24.5	30	33	39.5	43	53.5
L2		46	53	56	67	70	85

Hexagon Nipples (HN, Heavy type)



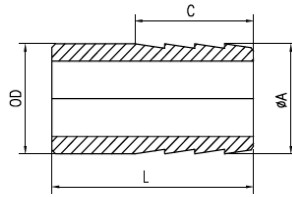
Item	Size	1/8"	1/4"	3/8"	1/2"	3/4"	1"	1 1/4"	1 1/2"	2"	2 1/2"	3"	4"
SW		12	14.5	17.5	22.6	27.7	36	43.5	50	63	77.5	91.5	116
L		23.2	25	28.5	37	41	45.4	50	53.3	61	72	77	83
ID		5.6	9	11.2	14.7	20	26.6	35	40	50	64.3	77.3	101
Square		6	6	6	6	6	8	8	8	8	8	8	8

Hexagon Nipples ISO4144 (HN)



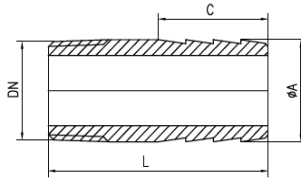
Item	Size	1/8"	1/4"	3/8"	1/2"S	3/4"S	1"S	1 1/4"S	1 1/2"S	2"S	2 1/2"S	3"S	4"S
SW		12	14.5	17.5	22.6	27.7	34	43	48.5	61.2	77.5	91.5	116
L		23.2	25	28.5	34.5	37	42	47.5	47.5	57	61	67.5	80
ID		5.6	9	11.2	15.6	20.7	27	35.4	40.7	51.7	66.5	78.5	103
Square		6	6	6	6	6	10	10	10	10	10	10	10

Simple Hose Nipple



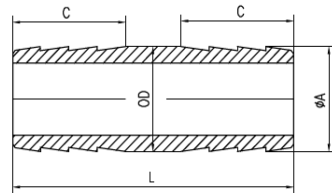
Item	Size	1/8"	1/4"	3/8"	1/2"	3/4"	1"	1 1/4"	1 1/2"	2"	2 1/2"	3"	4"
OD		10	13.72	17.15	21.34	26.67	33.4	42.16	48.26	60.33	76.2	88.9	114.3
ΦA		9.9	13.5	16.95	21.1	26.45	33.1	41.85	47.95	60	75.9	88.5	113.9
C		16	24	24	24	32	32	32	32	32	45	60	70
L		32	38	40	45	60	60	65	65	65	90	100	110

Male Hose Nipple



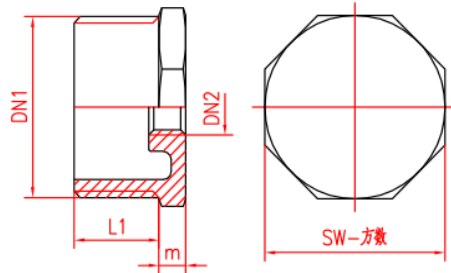
Item	Size	1/8"	1/4"	3/8"	1/2"	3/4"	1"	1 1/4"	1 1/2"	2"	2 1/2"	3"	4"
ΦA		9.9	13.5	16.95	21.1	26.45	33.1	41.85	47.95	60	75.9	88.5	113.9
C		16	24	24	24	32	32	32	32	32	45	60	70
L		34	42	47	50	60	62	63	65	70	105	120	140

Double Hose Nipple



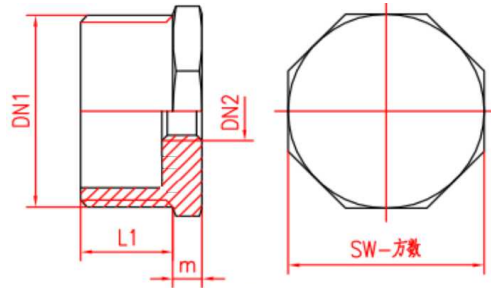
Item	Size	1/8"	1/4"	3/8"	1/2"	3/4"	1"	1 1/4"	1 1/2"	2"	2 1/2"	3"	4"
OD		10	13.72	17.15	21.34	26.67	33.4	42.16	48.26	60.33	76.2	88.9	114.3
ΦA		9.9	13.5	16.95	21.1	26.45	33.1	41.85	47.95	60	75.9	88.5	113.9
C		16	16	20	20	25	28	32	32	32	45	60	70
L		45	50	55	60	70	75	90	90	95	120	150	170

Hex. Bushing ISO4144 Type (HB)



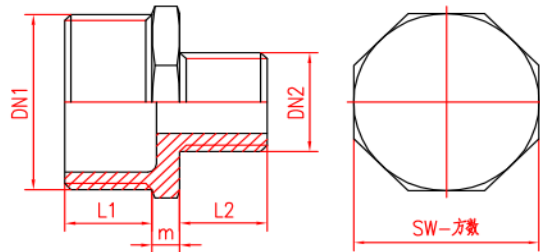
DN1 x DN2	m	L1	SW	DN1 x DN2	m	L1	SW
1 1/2" * 1/2"	6.5	20.5	49	2 1/2" * 2"	7	27	34
1 1/2" * 3/4"	6.5	20.5	49	3" * 1"	7.5	30	37.5
1 1/2" * 1"	6.5	20.5	49	3" * 1 1/4"	7.5	30	37.5
1 1/2" * 1 1/4"	6.5	20.5	49	3" * 1 1/2"	7.5	30	37.5
2" * 1/2"	7	25	62	3" * 2"	7.5	30	37.5
2" * 3/4"	7	25	62	3" * 2 1/2"	7.5	30	37.5
2" * 1"	7	25	62	4" * 1 1/2"	8	36	44
2" * 1 1/4"	7	25	62	4" * 2"	8	36	44
2 1/2" * 1"	7	27	34	4" * 2 1/2"	8	36	44
2 1/2" * 1 1/4"	7	27	34	4" * 3"	8	36	44
2 1/2" * 1 1/2"	7	27	34				

Hex. Bushing Heavy Type (HB)



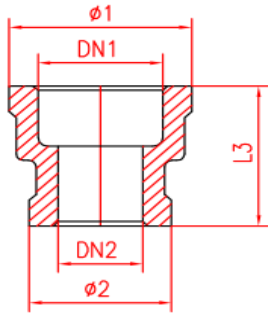
DN1 x DN2	m	L1	SW	DN1 x DN2	m	L1	SW
1/4" x 1/8"	4	11	15	1 1/2" x 1 1/4"	8.2	21.8	49
3/8" x 1/8"	3.5	11.5	17.5	2" x 1/2"	8.2	25.6	62
3/8" x 1/4"	5	12.7	18.5	2" x 3/4"	8.4	25.2	62
1/2" x 1/8"	4.8	15.2	22.5	2" x 1"	8.4	25.6	61.8
1/2" x 1/4"	4.8	15.4	22.5	2" x 1 1/4"	8.5	25.5	62.5
1/2" x 3/8"	4.8	15.1	22.5	2" x 1 1/2"	8.8	25.4	62.3
3/4" x 1/4"	5.7	16.6	28	2 1/2" x 1"	10.8	28	78.3
3/4" x 3/8"	5.8	16.7	28.3	2 1/2" x 1 1/4"	10.5	28.2	77.8
3/4" x 1/2"	5.6	16.9	28.5	2 1/2" x 1 1/2"	10.7	28.1	78.3
1" x 1/4"	6.8	19	34.8	2 1/2" x 2"	10.8	28.2	78
1" x 3/8"	6.8	19	34.8	3" x 1"	10.8	30	89.5
1" x 1/2"	7	18.9	34.8	3" x 1 1/4"	10.8	30	89.5
1" x 3/4"	7.2	18.8	35	3" x 1 1/2"	11	29.7	89.7
1 1/4" x 1/2"	8.5	20.5	44	3" x 2"	12	28.5	89.8
1 1/4" x 3/4"	8.5	20.3	43.4	3" x 2 1/2"	11.8	30.2	92.5
1 1/4" x 1"	8.4	20.6	43.9	4" x 1 1/2"	12	35.8	116.2
1 1/2" x 1/2"	8	21.5	48.8	4" x 2"	12	35.6	115.7
1 1/2" x 3/4"	8.5	21.5	49	4" x 2 1/2"	12	35.6	115.7
1 1/2" x 1"	8.4	21.6	49	4" x 3"	13	34.8	115.8

Red. Hex. Nipple (RHN)



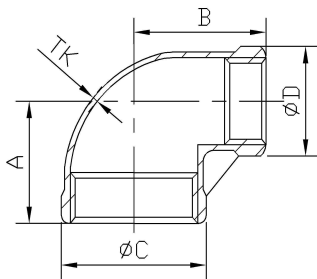
DN1 x DN2	m	L1	L2	SW	DN1 x DN2	m	L1	L2	SW
1/4" x 1/8"	5.7	12.1	9.3	15	1 1/2" x 1/2"	8.5	21	15	50
3/8" x 1/8"	5.7	12.2	9.1	18.5	1 1/2" x 3/4"	9.4	21	17	50
3/8" x 1/4"	6	12	12	18.5	1 1/2" x 1"	9.9	20.8	18.6	49.9
1/2" x 1/8"	5.5	14.5	8.8	22	1 1/2" x 1 1/4"	9.9	20.8	20.3	50
1/2" x 1/4"	5.8	14.5	11.7	22	2" x 1/2"	9.8	26	14.6	62.3
1/2" x 3/8"	5.5	14.6	12.3	22.5	2" x 3/4"	9.7	25.7	17	62
3/4" x 1/4"	6	15.5	11.3	28	2" x 1"	9.4	26	18.6	62
3/4" x 3/8"	6.6	16.6	13	28.4	2" x 1 1/4"	10.3	25.3	20.7	61.9
3/4" x 1/2"	6.3	17	14.5	28.4	2" x 1 1/2"	9.5	26	21.5	62
1" x 1/4"	8.8	19.2	12	35	2 1/2" x 1"	10.8	28	18.2	78.5
1" x 3/8"	7.2	18.8	12.8	35.3	2 1/2" x 1 1/4"	10.6	28	20.4	78
1" x 1/2"	6.3	19	15	34.5	2 1/2" x 1 1/2"	10.3	28.5	21	78
1" x 3/4"	7	18.3	16.6	35.2	2 1/2" x 2"	11	29.5	25	78
1 1/4" x 3/8"	25.5	2	12	44	3" x 2"	12	30	25.3	92
1 1/4" x 1/2"	7.8	20.2	15	44.2	3" x 2 1/2"	12.2	30	28.5	92
1 1/4" x 3/4"	7.7	20.5	16.8	44	4" x 3"	12	34	32	115.5
1 1/4" x 1"	7.8	20.5	18.3	44					

Reduce Socket Banded(RSB)



DN1 x DN2	Φ1	Φ2	L3	DN1 x DN2	Φ1	Φ2	L3
1/4"*1/8"	17.1	14	21.1	11/2"*1"	55.2	38.5	43
3/8"*1/8"	22	14	25	11/2"*11/4"	55.3	48.5	46
3/8"*1/4"	22	17.5	28.1	2"*1/2"	64.4	25.3	45.5
1/2"*1/4"	26.5	17.3	29.1	2"*3/4"	64.5	30.8	45.5
1/2"*3/8"	26.1	21	31.7	2"*1"	66.3	38.7	49.2
3/4"*1/4"	32	17	30.8	2"*11/4"	68.7	49.2	51.2
3/4"*3/8"	32.2	21	33.4	2"*11/2"	69	55.5	51.5
3/4"*1/2"	32.1	27	36.6	21/2"*11/4"	82.3	47	53
1"*1/4"	40	17.2	33	21/2"*11/2"	82.2	53	53
1"*3/8"	39.6	21.2	35.5	21/2"*2"	83	65.75	58.3
1"*1/2"	38.77	26	36.5	3"*2"	95.5	66	60
1"*3/4"	39.5	32	40	3"*21/2"	95.5	81.9	63.3
11/4"*1/2"	46.1	25	41.2	3"*21/2"	95.5	82.2	72
11/4"*3/4"	49	32	42.4	4"*2"	123.5	68.4	68
11/4"*1"	48.9	39	43.2	4"*21/2"	124	83.3	68.2
11/2"*1/2"	55.2	26.3	38.2	4"*3"	124	97.7	95.5
11/2"*3/4"	52.3	30.8	42				

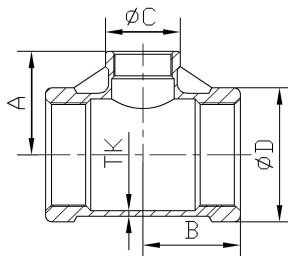
Reduce 90 Elbow(RLB)



Size:

1/2"*3/8"	1/2"*1/4"	3/4"*1/2"	3/4"*3/8"	3/4"*1/4"	1"*3/4"	1"*1/2"	1"*3/8"	1"*1/4"	11/4"*1"	11/4"*3/4"	11/4"*1/2"	11/2"*11/4"
11/2"*1"	11/2"*3/4"	11/2"*1/2"	2"*11/2"	2"*11/4"	2"*1"	2"*3/4"	2"*1/2"					

Reduce Tee (RTB)



Size:

1/2"*3/8"	1/2"*1/4"	3/4"*1/2"	3/4"*3/8"	3/4"*1/4"	1"*3/4"	1"*1/2"	1"*3/8"	1"*1/4"	11/4"*1"	11/4"*3/4"	11/4"*1/2"	11/2"*11/4"
11/2"*1"	11/2"*3/4"	11/2"*1/2"	2"*11/2"	2"*11/4"	2"*1"	2"*3/4"	2"*1/2"					